



IN THEIR SHOES: Teens and Dating Violence



NATIONAL
LGBTQ
INSTITUTE
ON IPV

Presents:

IN THEIR SHOES:

AN INCLUSIVE LGBTQ PREVENTION EDUCATION TOOL
THAT YOU SHOULD BE USING IN YOUR COMMUNITY!

Ilene Stohl
Margaret Hobart
02.06.18

A LITTLE ABOUT US

Margaret Hobart



**The
Northwest
Network**
of bi, trans, lesbian &
gay survivors of abuse

Ilene Stohl

WASHINGTON STATE COALITION

WSCADV

AGAINST DOMESTIC VIOLENCE



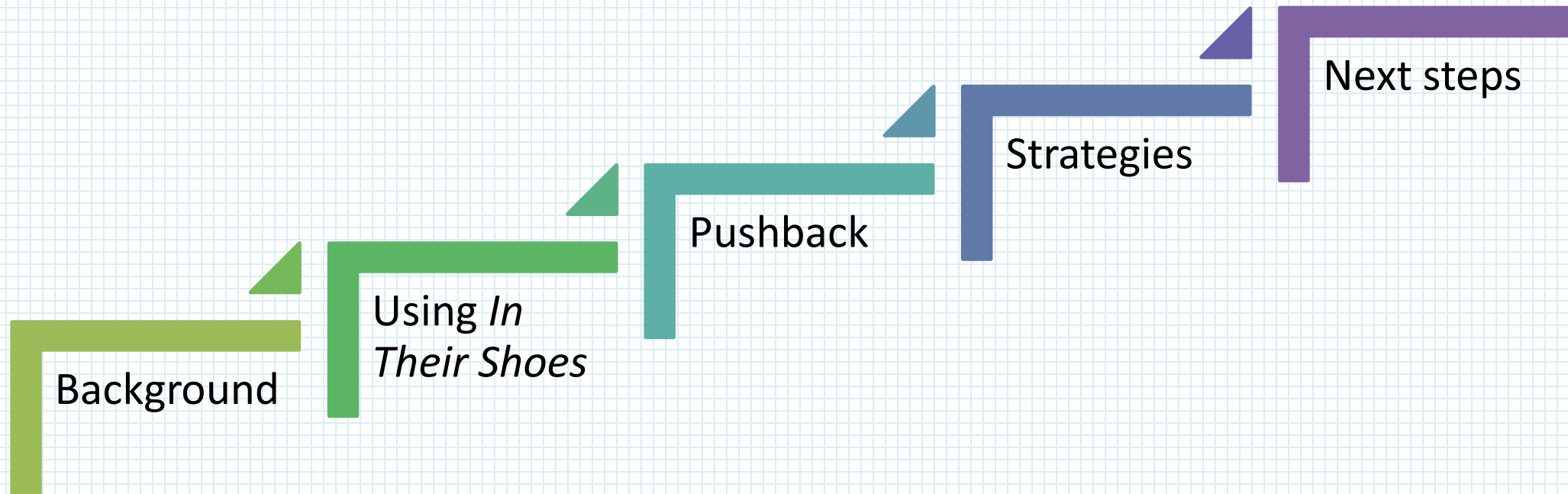
A LITTLE ABOUT YOU

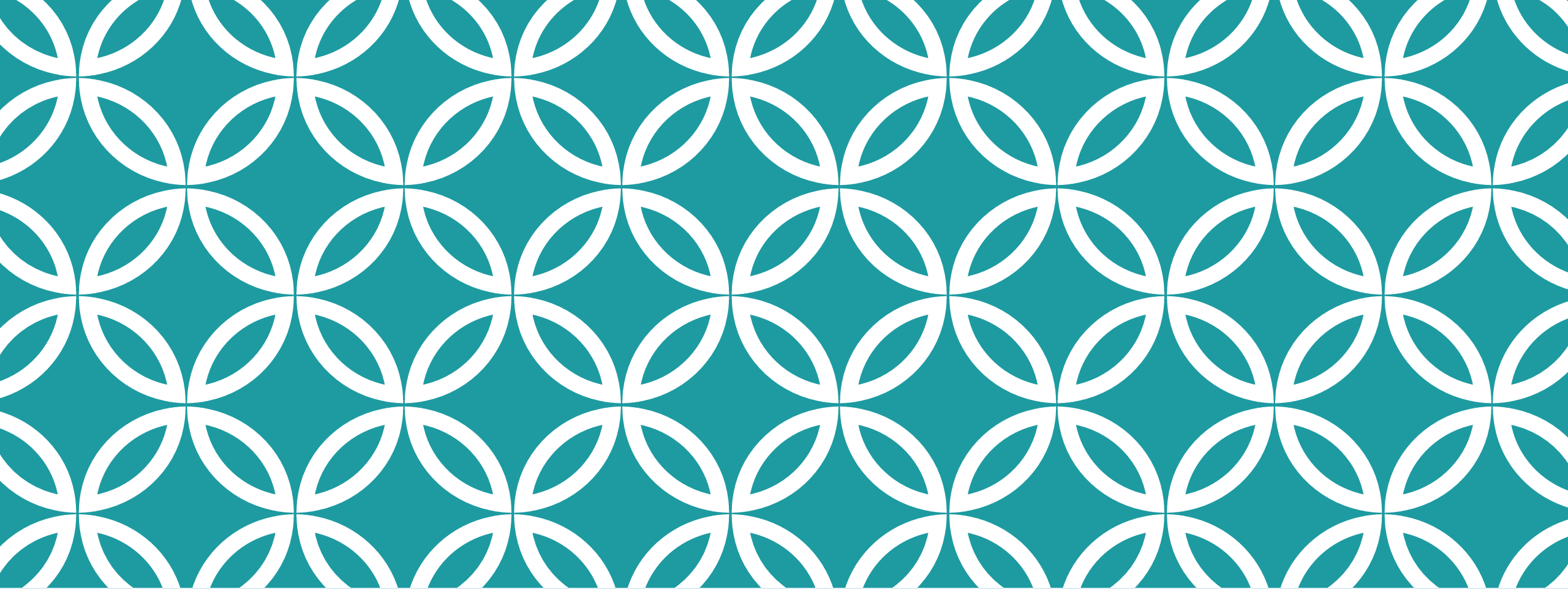
Who is familiar with In Their Shoes / In Her Shoes in any form?

Who has facilitated In Their Shoes with adults?

Who has facilitated In Their Shoes in a classroom with teens?

AGENDA

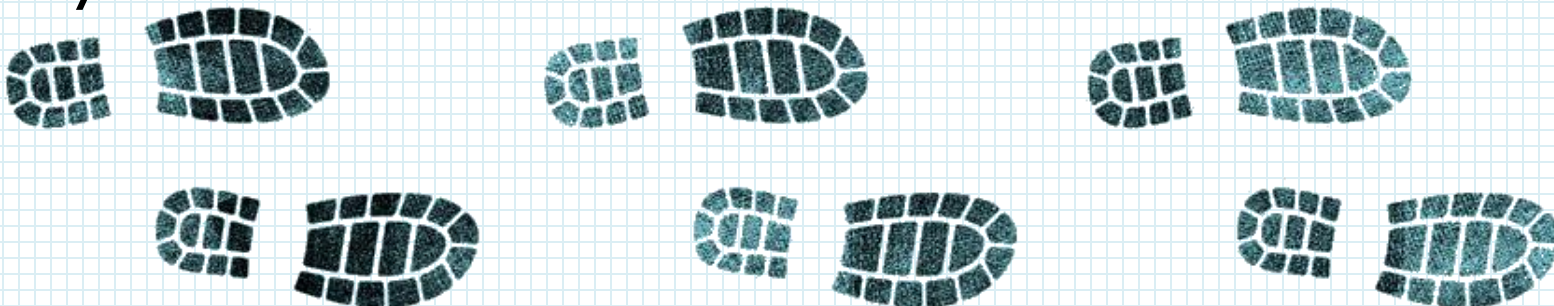




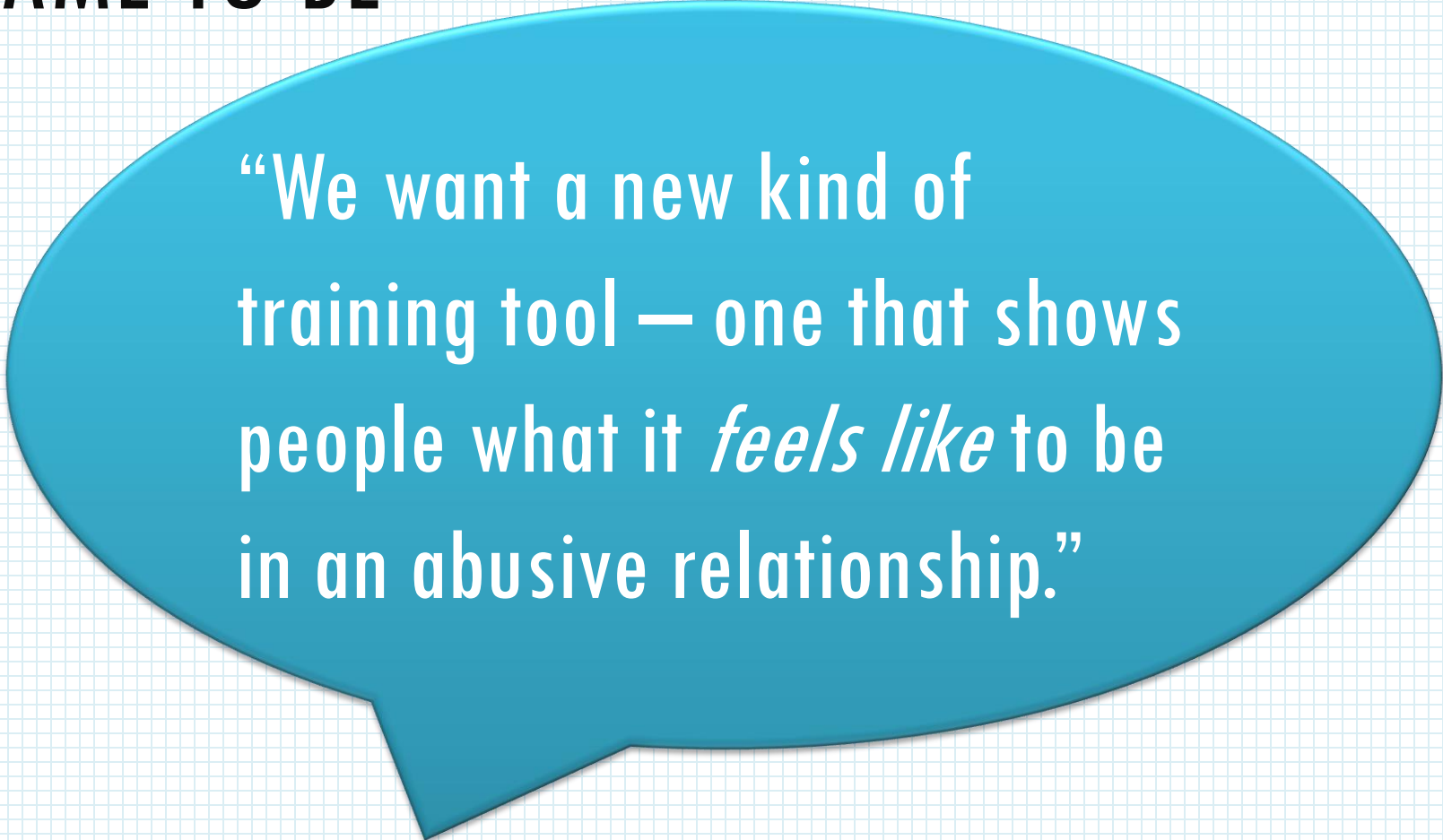
BACKGROUND

WHAT IS *IN THEIR SHOES*?

- Training kits – experiential learning activities
 - See more at wscadv.org/resources/in-their-shoes-training-kits/
- Participants become a character based on the experiences of real survivors.
- They make choices about their relationships and move through the scenario by reading about interactions with their partner and various systems.



HOW IT CAME TO BE



“We want a new kind of training tool — one that shows people what it *feels like* to be in an abusive relationship.”

Washington State Coalition Against Domestic Violence Survivors in Service Members, 1999

IN THEIR SHOES — TEENS AND DATING VIOLENCE

A call to action

Community/family tragedy led to request and subsequent funding



Menu

The Seattle Times

Local News

Log In | Subscribe



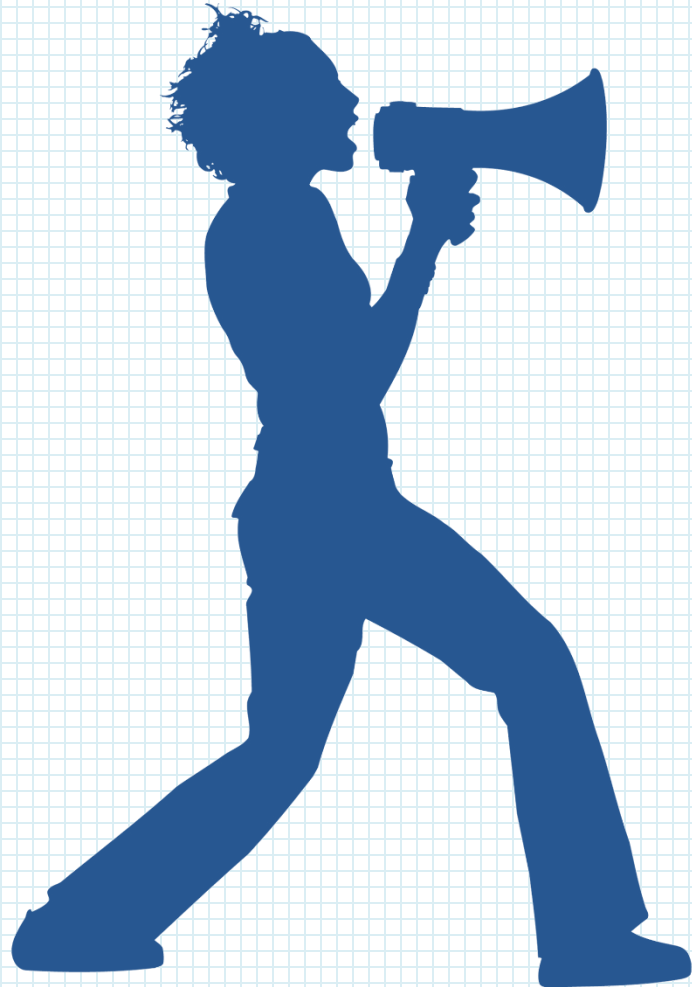
Eastside | Local News

Parents of slain Stanwood teen donate \$100,000 to domestic violence prevention

Originally published November 19, 2008 at 12:00 am

The parents of an 18-year-old Stanwood girl who was killed in 2004 by an ex-boyfriend who had stalked her with a gun will contribute \$100,000 to domestic violence prevention from a \$1.75 million settlement with Snohomish County.

HOW IT'S USED AS A SOCIAL JUSTICE TOOL



Amplifies the experiences of survivors

Calls communities and systems to action

Lifts up the voices of marginalized people

Demonstrates the complexities and intersectionalities of peoples' lives

Honors and pays tribute to lives lost

Starts an important conversation

IN THEIR SHOES CHARACTERS — BASED ON DIVERSE, REAL LIFE STORIES OF TEENS

Ashley

Cara

Derek

Elena

Kyoko

Samantha

TWO LGBTQ CHARACTERS

Kyoko is a 19-year-old artist living with her parents. She is in a healthy relationship with a young woman, Meera. Kyoko's ex-boyfriend, George, who is very close with her family, returns home from military service overseas and expects to get back together with her. Kyoko's story is marked by homophobia, by George's escalating control and physical aggression, and by confusion about how much of George's behavior is related to his experiences at war. In the end, we don't know what George will do, but Kyoko's family rallies to support her.

At the end of her story, participants are asked to consider:

- How does homophobia play into George's attempts to control Kyoko?
- How do you think George's military service has affected him?
- How is Kyoko's new relationship with Meera different from her past relationship with George?

Samantha is almost 15 and has just started a relationship with 17-year-old runaway Roxanna. Roxanna provides a much-needed connection to a community in which Sam feels like she can be herself. Roxanna also pressures her to drink, to stay out all night, and to disconnect from her family. Samantha's story is marked by Roxanna's increasing jealousy and abuse, by problems related to alcohol use, and by Sam's shaky relationship with her homophobic parents, which leads her to leave home.

At the end of her story, participants are asked to consider:

- What does Sam need?
- Does sexual orientation affect how you think about relationships? How so?

FACILITATION TIPS



Target Audience

- You can use this with adults or youth ages 14+
- If you are thinking about using it with younger folks, consider doing one character (Elena) and having the group make decisions together.
- Engage with parents, educators, school board members, law enforcement, community members, policy makers, social service workers, healthcare workers, clergy or religious congregations, and anyone that you can think of who would benefit from an in-depth look at teens and relationships.



Timing

- You need 50 minutes to do the simulation and the critical debriefing discussion.
- If you have more time, you can encourage participants to do multiple characters or do a secondary activity

FACILITATION TIPS

Use the script if you are nervous.

Ask a participant who did the character Cara to read aloud the letter from Dayna's mom to the group when you come back for the debrief. (Be sure to ask them to read it first and see if they feel up to it.)

Keep the group talking –refer to facilitator's guide for specific questions and prompts.

Consider allowing the groups to ponder 1-2 key questions in small groups – according to their character

MORE FACILITATION TIPS

Allow the participants to challenge each other.

Keep in mind that for many participants, it is the first time they have had to consider the dynamics of domestic/dating violence. Be kind and patient.

Gently correct misinformation and offer alternative ways of viewing it but stop people in their tracks if they start being really offensive.

Offer your program as a resource.

Close with time to discuss better response to teens and telling young people that they deserve to have healthy relationships

MARKETING AND BOOSTING ATTENDANCE

Use DVAM and Teen DV Month as an excuse.

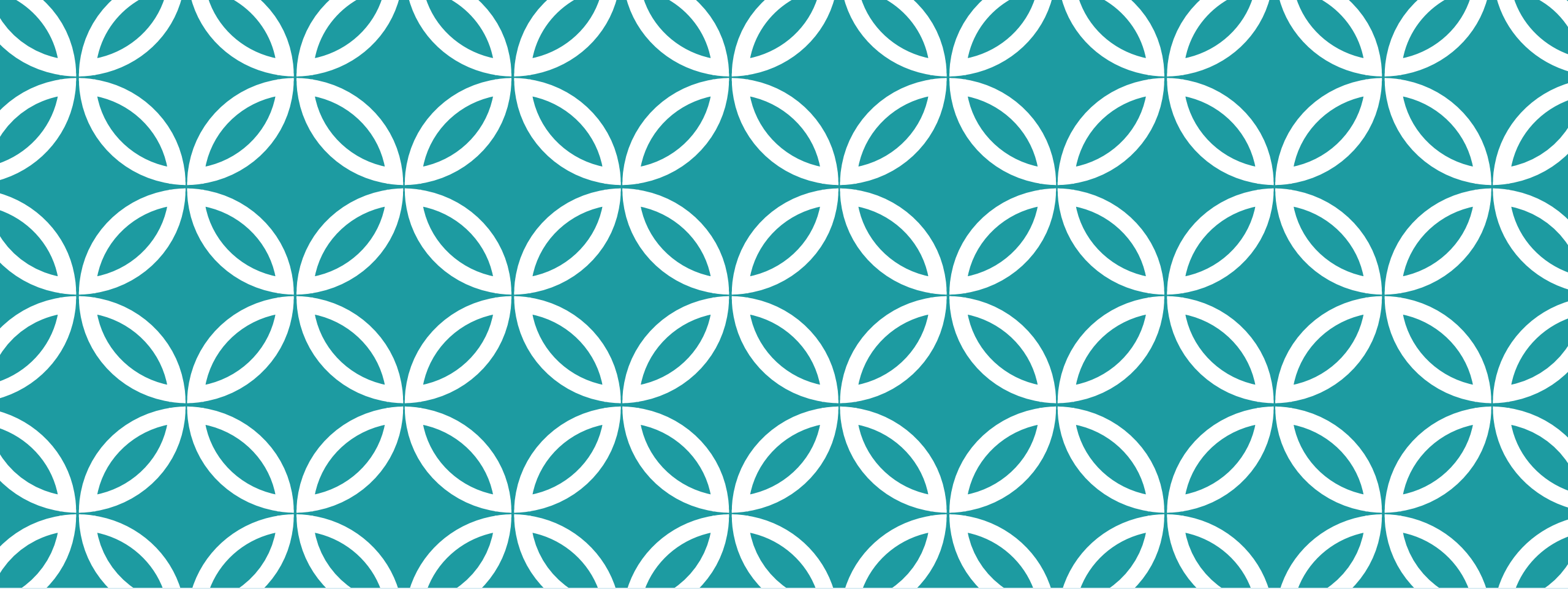
Partner with a teacher and offer to come in and do it. ITS is an easy way to start talking about healthy relationships.

Enlist enthusiastic teens to help you.

Talk with principals about their school culture and how this fits in perfectly.

Do it at PTA events, with superintendents, and other key decision makers.

Most importantly, no matter what you do:
OFFER FOOD AND DRINKS!!!
Get someone to donate it if your program can't spring for it.

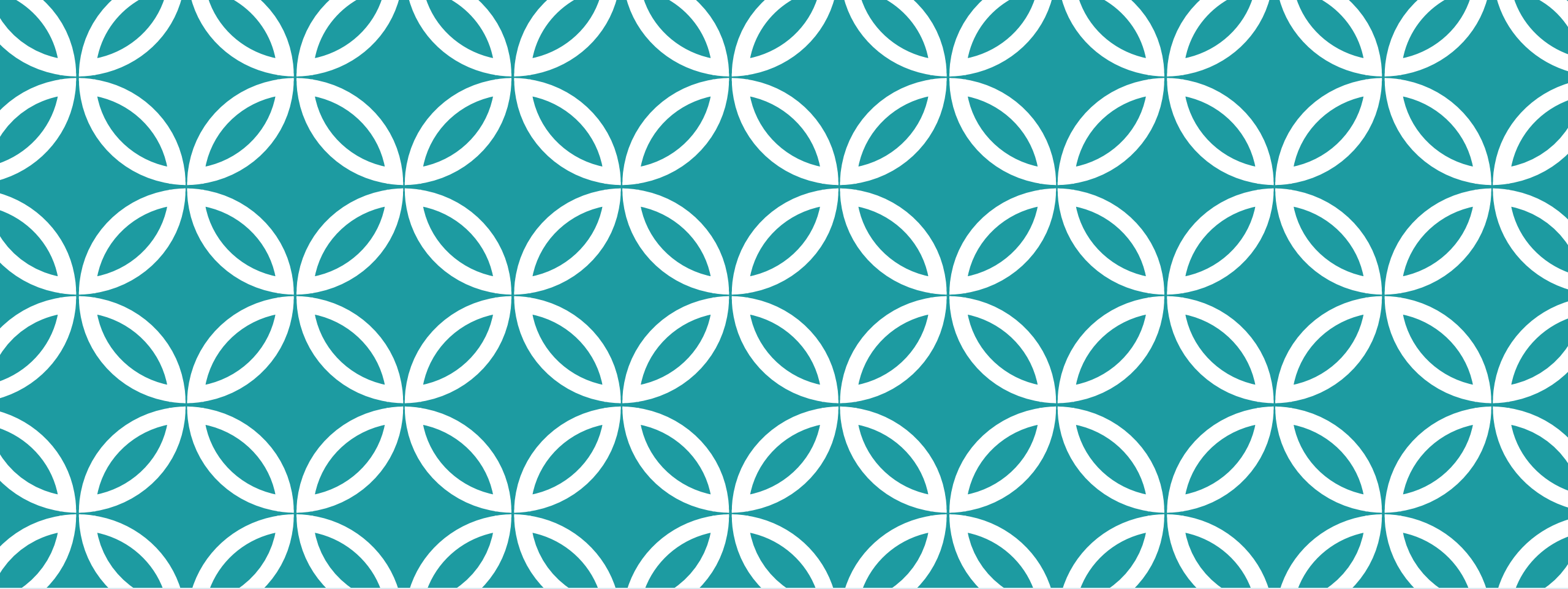


PUSHBACK



WHAT HAS COME UP FOR YOU IN TERMS OF
PUSHBACK?





STRATEGIES |

EMBRACE YOUR EXPERTISE



With:

Teachers

Administrators

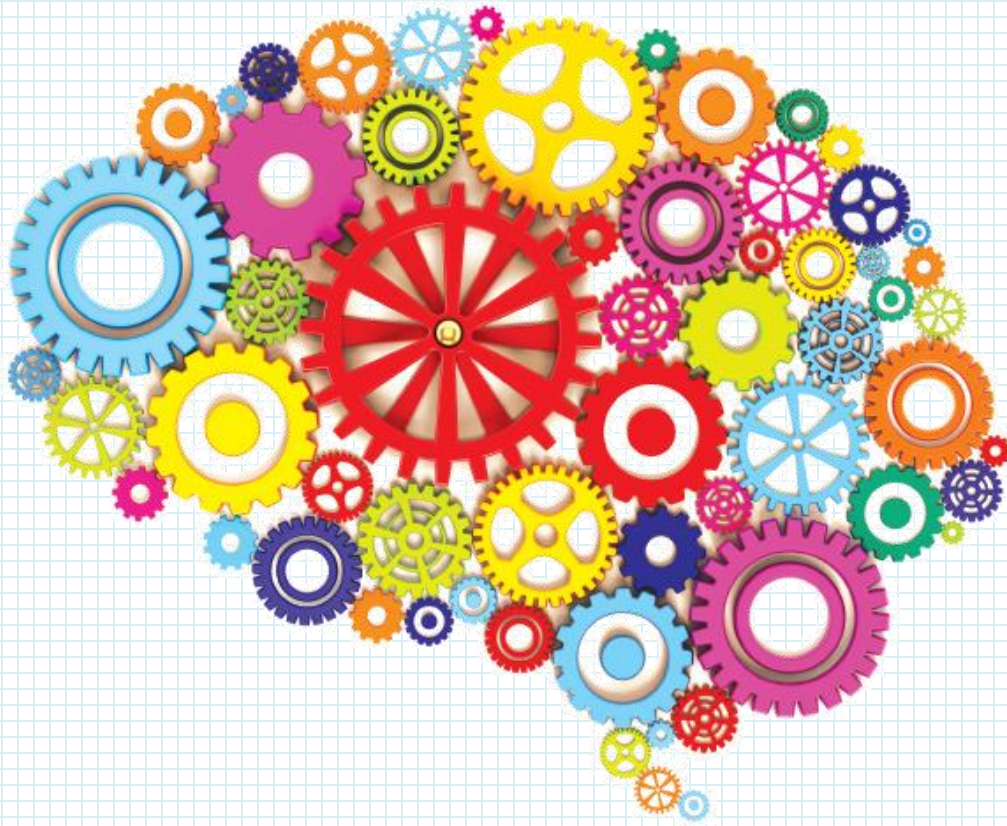
Parents

DON'T LOSE YOUR ANALYSIS



What's at stake if
you don't include
LGBTQ characters?

DON'T LOSE YOUR ANALYSIS



Homophobia is connected to gender based violence, dating violence and hostile school environments.

DEAL WITH THE HOMOPHOBIA



DEAL WITH THE HOMOPHOBIA

Strategies:

Notice it; name it

Ask the group to consider....

Point out...

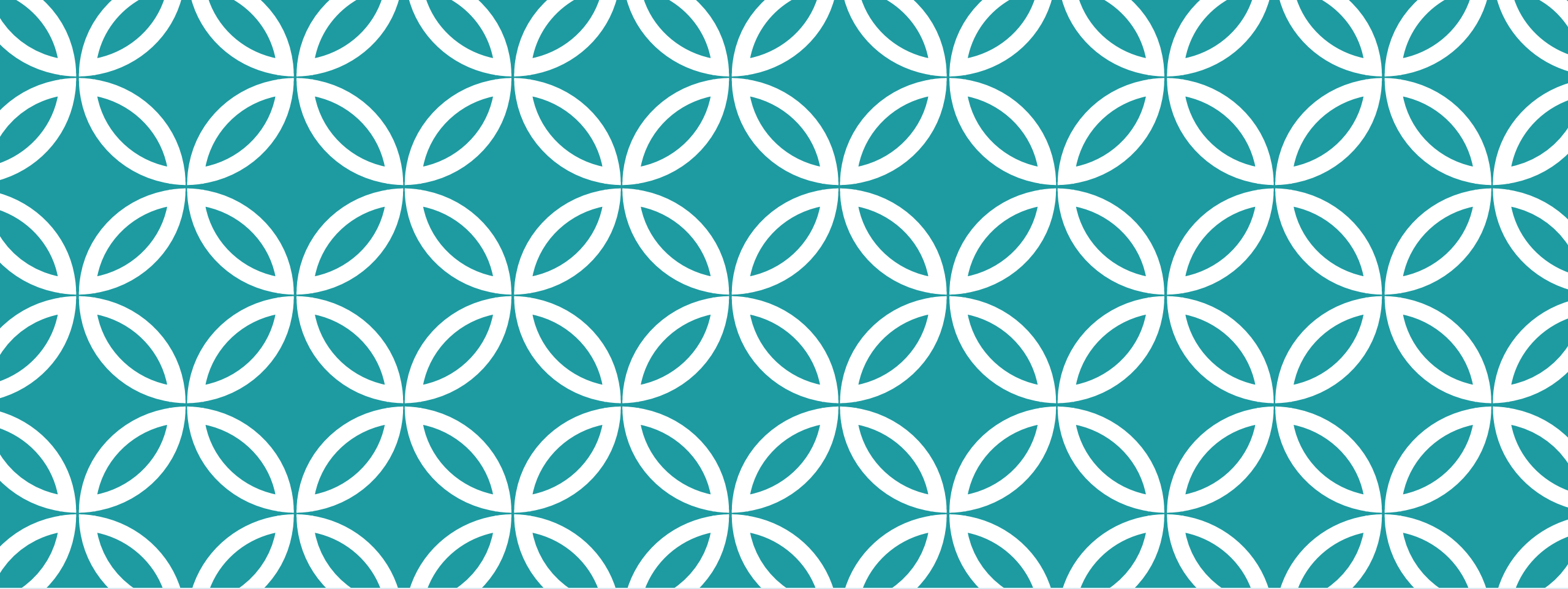
Other specific strategies or categories of strategies

YOU CAN DO IT!



motivational penguin

chibird



NEXT STEPS



THANK YOU AND KEEP IN TOUCH!

Margaret Hobart

margaret@nwnetwork.org

206.568.7777

Ilene Stohl

ilene@wscadv.org

360.586.1022 ext. 302

